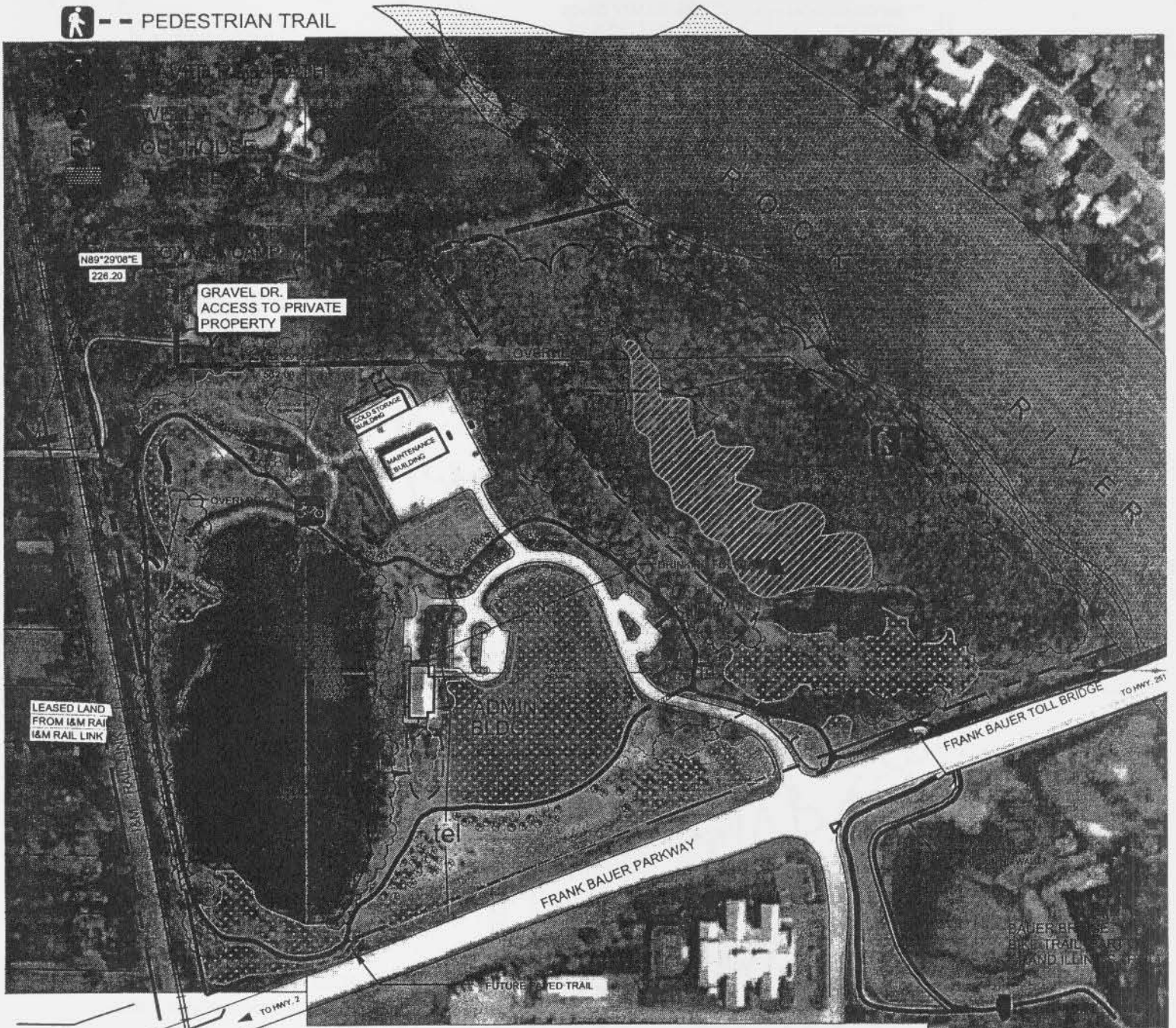


LEGEND

 PEDESTRIAN TRAIL



DIRECTIONS: 1-1/4 miles N of Riverside and North Main  
Directly west of Bauer Toll Bridge (Harlem Bridge)

FACILITIES: 44.5 acre preserve. Tall Grass Prairie, old quarry pond (no fishing in pond), outhouse, drinking fountain, Forest Preserve Administration Headquarters and Central Maintenance Facility

Preserve open at 7:00 AM - closed 1/2 hour after sunset.  
All reservations subject to GENERAL USE REGULATION ORDINANCE.



0 100 300FT

# HEADQUARTERS FOREST PRESERVE

5500 NORTHROCK DRIVE



JANUARY 2002